

RULES OF PLAY AT THE SUNDANCE TRAIL DISC GOLF COURSE

When entering and leaving the property ALWAYS close the gate behind you.

If the horses get out it's a big problem.

ALL FENCE LINES ARE OB • THE POND IS OB

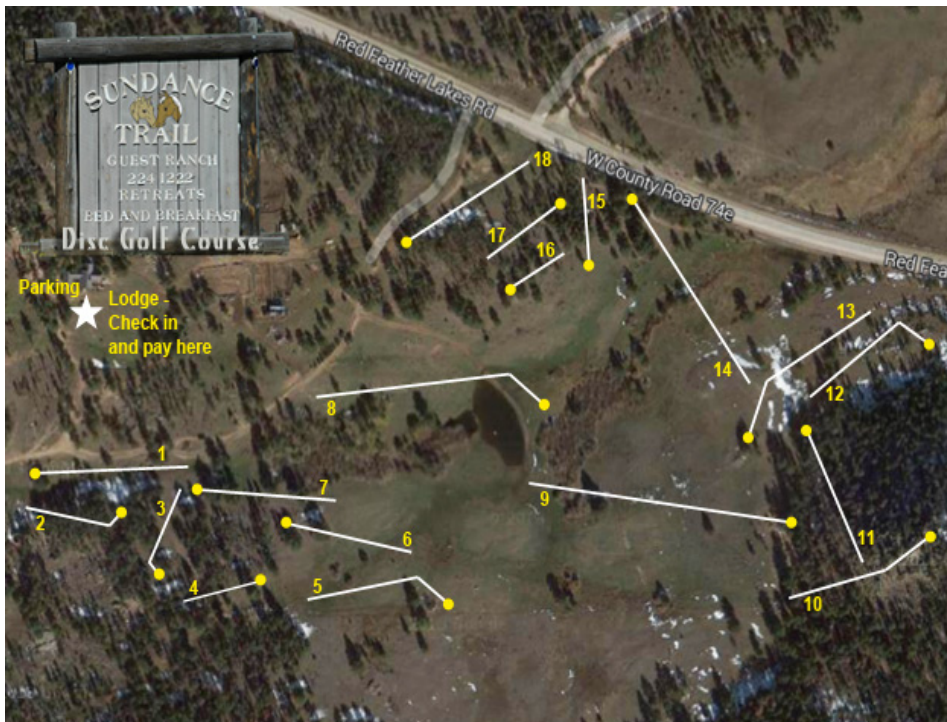
- Drive slowly - There are unexpected animals
- Day guests park in the lodge parking lot.
- Day guests please "sign in" in the lodge dining room
- Please do not throw discs around the horses on the course or otherwise. It will only be a short moment before they are out of reach. Just wait.
- Please have "minimal impact" on the land as you participate. Don't break tree branches intentionally, Don't pick the wild flowers and leave no trash.
- Please hydrate as you are at 7930 feet.
- No smoking on the course. Smoking is allowed on the lodge front deck only.

PLEASE CHECK OUT THE AMENITIES OF THE GUEST RANCH.

Bed and Breakfast (Winter Rates - Pet Friendly)

Lodging • Meals • Horseback Riding

Mountain Bike Trails and Massage



RULES OF PLAY AT THE SUNDANCE TRAIL DISC GOLF COURSE

When entering and leaving the property ALWAYS close the gate behind you.

If the horses get out it's a big problem.

ALL FENCE LINES ARE OB • THE POND IS OB

- Drive slowly - There are unexpected animals
- Day guests park in the lodge parking lot.
- Day guests please "sign in" in the lodge dining room
- Please do not throw discs around the horses on the course or otherwise. It will only be a short moment before they are out of reach. Just wait.
- Please have "minimal impact" on the land as you participate. Don't break tree branches intentionally, Don't pick the wild flowers and leave no trash.
- Please hydrate as you are at 7930 feet.
- No smoking on the course. Smoking is allowed on the lodge front deck only.

PLEASE CHECK OUT THE AMENITIES OF THE GUEST RANCH.

Bed and Breakfast (Winter Rates - Pet Friendly)

Lodging • Meals • Horseback Riding

Mountain Bike Trails and Massage



Sundance Trail
 Guest Ranch & Disc Golf Course
 970-224-1222 • sundancetrail.com



WRIGHT LIFE
 wrightlife.com • 800-321-8833

HOLE #1	1	2	3	4	5	6	7	8	9		10	11	12	13	14	15	16	17	18			TOTAL
Pin Position A	390	156	264	210	411	285	306	522	600	F9	171	210	351	360	510	290	150	175	350	B9	F9	TOTAL

Sundance Trail Guest Ranch features a wide variety of activities for the whole family. Bordering on National Forest land there is virtually unlimited territory in the beautiful Colorado Rocky Mountains to explore. Red Feather Lakes is one of the magical places on earth that truly defines Colorado. Come explore and have a great time doing it. From Fort Collins take Hwy 287 North to the Livermore / Red Feather turn off. Go West 22 miles (1 mile past the Boy Scout turnoff). The Ranch is on your left.
 Lodging • Meals • Horseback Riding • Massage • Mountain Bike Trails • Call for Tee Times: 970-224-1222



Sundance Trail
 Guest Ranch & Disc Golf Course
 970-224-1222 • sundancetrail.com



WRIGHT LIFE
 wrightlife.com • 800-321-8833

HOLE #1	1	2	3	4	5	6	7	8	9	F9	10	11	12	13	14	15	16	17	18	B9	F9	TOTAL
Pin Position A	390	156	264	210	411	285	306	522	600	F9	171	210	351	360	510	290	150	175	350	B9	F9	TOTAL

Sundance Trail Guest Ranch features a wide variety of activities for the whole family. Bordering on National Forest land there is virtually unlimited territory in the beautiful Colorado Rocky Mountains to explore. Red Feather Lakes is one of the magical places on earth that truly defines Colorado. Come explore and have a great time doing it. From Fort Collins take Hwy 287 North to the Livermore / Red Feather turn off. Go West 22 miles (1 mile past the Boy Scout turnoff). The Ranch is on your left.
 Lodging • Meals • Horseback Riding • Massage • Mountain Bike Trails • Call for Tee Times: 970-224-1222