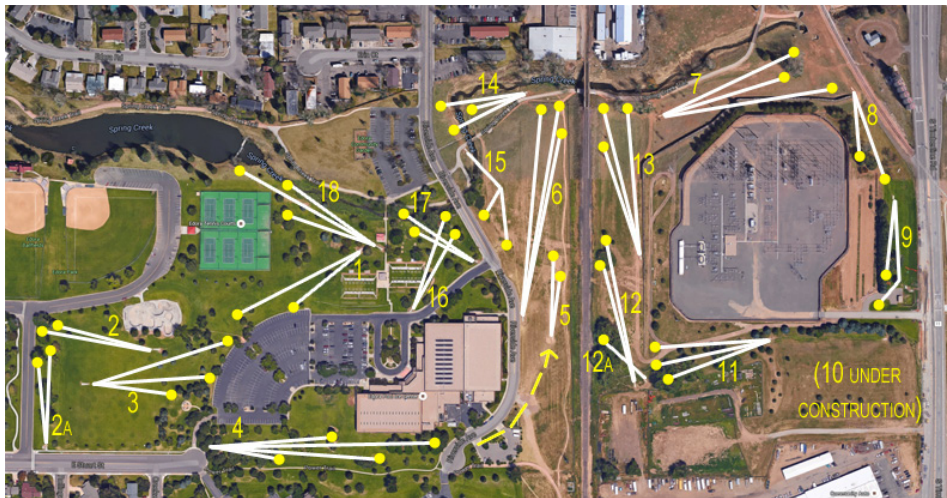


### Multiple Baskets

Yes! A second basket has been added on most holes. If you see a gray basket it is the shorter of two positions. A blue basket is either the longer position, or the only basket on that hole. Respect the players behind you: play just one of the two, then move on.

### RULES OF PLAY

- 1) PLEASE RESPECT THE PEDESTRIANS, BIKERS, AND OTHER PARTICIPANTS AT EDORA PARK. DO NOT THROW WHEN OTHERS ARE IN THE WAY OF YOUR SHOT.
- 2) TEE SHOTS - Players must throw from within the designated tee area.
- 3) OTHER SHOTS - The forward foot, at the time of release, must be placed where the disc previously landed.
- 4) PUTTS - must remain within the chain area or in the basket, to be good.
- 5) ETIQUETTE - The player farthest from the hole is the one that should shoot or putt first. Do not distract others when they are taking their throws.
- 6) PROTECT YOUR ENVIRONMENT. PLEASE KEEP EDORA PARK CLEAN. ALSO, PLEASE DO NOT CLIMB TREES AND KEEP DOGS ON A LEASH AT ALL TIMES.



### Multiple Baskets

Yes! A second basket has been added on most holes. If you see a gray basket it is the shorter of two positions. A blue basket is either the longer position, or the only basket on that hole. Respect the players behind you: play just one of the two, then move on.

### RULES OF PLAY

- 1) PLEASE RESPECT THE PEDESTRIANS, BIKERS, AND OTHER PARTICIPANTS AT EDORA PARK. DO NOT THROW WHEN OTHERS ARE IN THE WAY OF YOUR SHOT.
- 2) TEE SHOTS - Players must throw from within the designated tee area.
- 3) OTHER SHOTS - The forward foot, at the time of release, must be placed where the disc previously landed.
- 4) PUTTS - must remain within the chain area or in the basket, to be good.
- 5) ETIQUETTE - The player farthest from the hole is the one that should shoot or putt first. Do not distract others when they are taking their throws.
- 6) PROTECT YOUR ENVIRONMENT. PLEASE KEEP EDORA PARK CLEAN. ALSO, PLEASE DO NOT CLIMB TREES AND KEEP DOGS ON A LEASH AT ALL TIMES.



**WRIGHT LIFE**  
wrightlife.com • 800-321-8833

| HOLE # | 1 | 2 | 2a | 3 | 4 | 5 | 6 | 7 | 8 | Fr | 9 | 11 | 12a | 12 | 13 | 14 | 15 | 16 | 17 | 18 | Ba | Fr | TOTAL |  |
|--------|---|---|----|---|---|---|---|---|---|----|---|----|-----|----|----|----|----|----|----|----|----|----|-------|--|
|        |   |   |    |   |   |   |   |   |   |    |   |    |     |    |    |    |    |    |    |    |    |    |       |  |
|        |   |   |    |   |   |   |   |   |   |    |   |    |     |    |    |    |    |    |    |    |    |    |       |  |
|        |   |   |    |   |   |   |   |   |   |    |   |    |     |    |    |    |    |    |    |    |    |    |       |  |
|        |   |   |    |   |   |   |   |   |   |    |   |    |     |    |    |    |    |    |    |    |    |    |       |  |
|        |   |   |    |   |   |   |   |   |   |    |   |    |     |    |    |    |    |    |    |    |    |    |       |  |



**WRIGHT LIFE**  
wrightlife.com • 800-321-8833

| HOLE # | 1 | 2 | 2a | 3 | 4 | 5 | 6 | 7 | 8 | Fr | 9 | 11 | 12a | 12 | 13 | 14 | 15 | 16 | 17 | 18 | Ba | Fr | TOTAL |  |
|--------|---|---|----|---|---|---|---|---|---|----|---|----|-----|----|----|----|----|----|----|----|----|----|-------|--|
|        |   |   |    |   |   |   |   |   |   |    |   |    |     |    |    |    |    |    |    |    |    |    |       |  |
|        |   |   |    |   |   |   |   |   |   |    |   |    |     |    |    |    |    |    |    |    |    |    |       |  |
|        |   |   |    |   |   |   |   |   |   |    |   |    |     |    |    |    |    |    |    |    |    |    |       |  |
|        |   |   |    |   |   |   |   |   |   |    |   |    |     |    |    |    |    |    |    |    |    |    |       |  |
|        |   |   |    |   |   |   |   |   |   |    |   |    |     |    |    |    |    |    |    |    |    |    |       |  |

